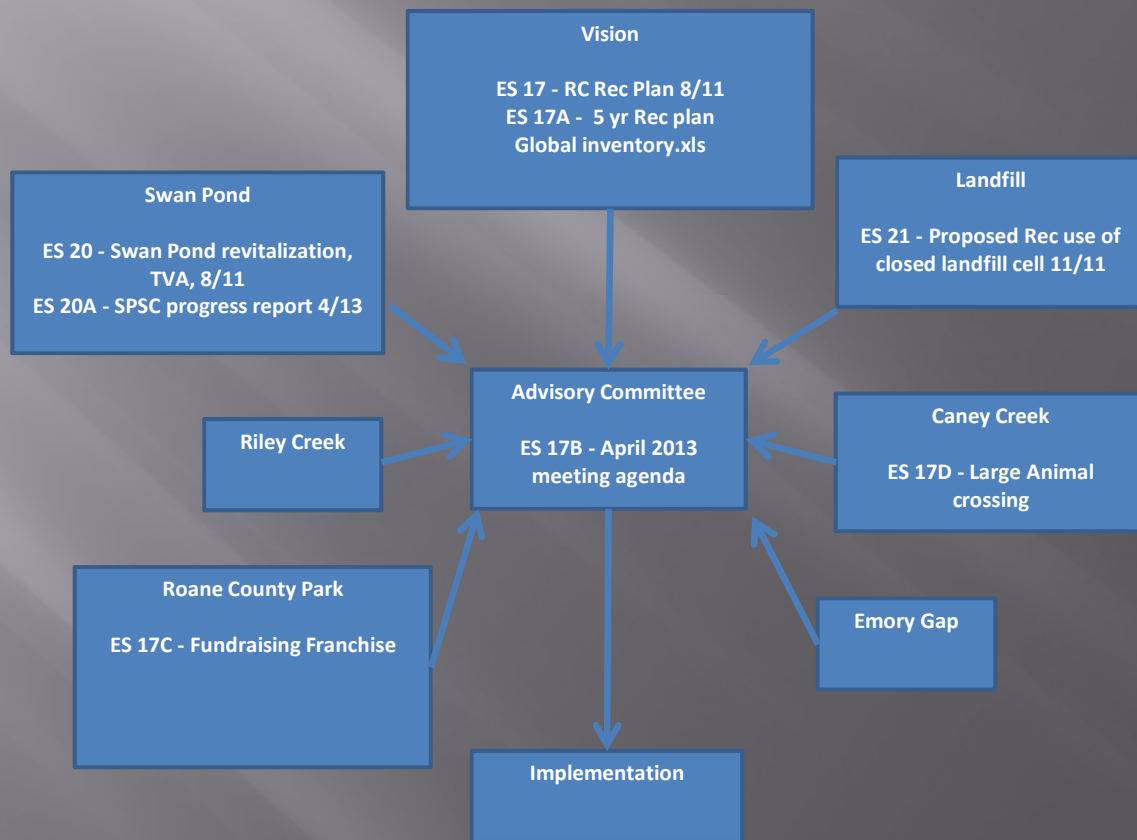


# ROANE COUNTY PARKS AND RECREATION

The PROCESS of DEVELOPING  
a 5 Year plan, to provide:

*A vision for Recreation Capital and  
Programming Improvements  
throughout Roane County*



# Objective

Develop a 5 year Vision for recreation capital and programming improvements county-wide:

To improve the quality of life for citizens

and

make the area more attractive for business development

# General Approach

*Baseline - Review of prior work*

*Create a Global List of recreation possibilities and then compare it to the county wide recreation inventory*

*Then decide what we need*

# Prior work

## Existing Executive summaries relating to Roane County Parks and Recreation

- 1 #16 Capital Outlay – August 2011
- 2 #16A Capital Plan Implementation – August 2011
- 3# 17 RC Recreation Plan – August 2011
4. #20 Swan Pond revitalization August 2011
5. #21 Proposed Recreational use of closed landfill
6. #24 Celebration of success – June 2012

# Next Steps – under development

Determine what we have – (Kingston, Harriman, Rockwood, Oliver springs, County) COMPLETE

Determine what we need – define the GAP

Develop a plan to close the gap - a 5 year plan for recreation in Roane County

# Approach

- ▣ Gain public input – integrate into inventory and global list of possibilities
- ▣ Record/Publish minutes
- ▣ Continuously solicit public input
- ▣ Solicit cooperation with all Roane governmental entities
- ▣ Remain flexible, open to changes re: vision/goals/scope
- ▣ Form partnerships for large projects
  - Government
  - Private

# Action Plan

Compare inventory to global list

Determine which growth areas most greatly benefit our citizens

Set parameters to focus the vision

- Breadth of interest

- Cost

- Age appropriate

- Risk exposure

- Others

Define - *The Gap* - what is missing



# Defining The Gap -an example

All possible Recreation activities

What we have Inventory	Planned in the works	Need <u>The Gap</u>	Wanted Low use limited appeal	Rejected Risk Exposure Specialized \$ Demog. Too ambitious mismatch Time to completion
---------------------------	-------------------------	------------------------	--	---





1. **Identified**
  - a. – the gap
2. **Prioritized**
  - a. - highest use, cost (capital and operation), risk, time to complete, demographics
3. **Planned**
  - a. Develop conceptual plan/present to commission/ gain approval
  - b. Projects list
  - c. Identify which governmental entity pursues which project
4. **Fund**
  - a. Sources and approval
5. **Build**
  - a. Execute the plan

# Where are we now?

- ▣ Compare inventory to global list - complete
- ▣ Determine which most greatly benefit our citizens
- ▣ Set parameters to focus the vision
  - Breath of interest
  - Cost
  - Age appropriate
  - Risk exposure
  - Others
  
- ▣ Define the gap