

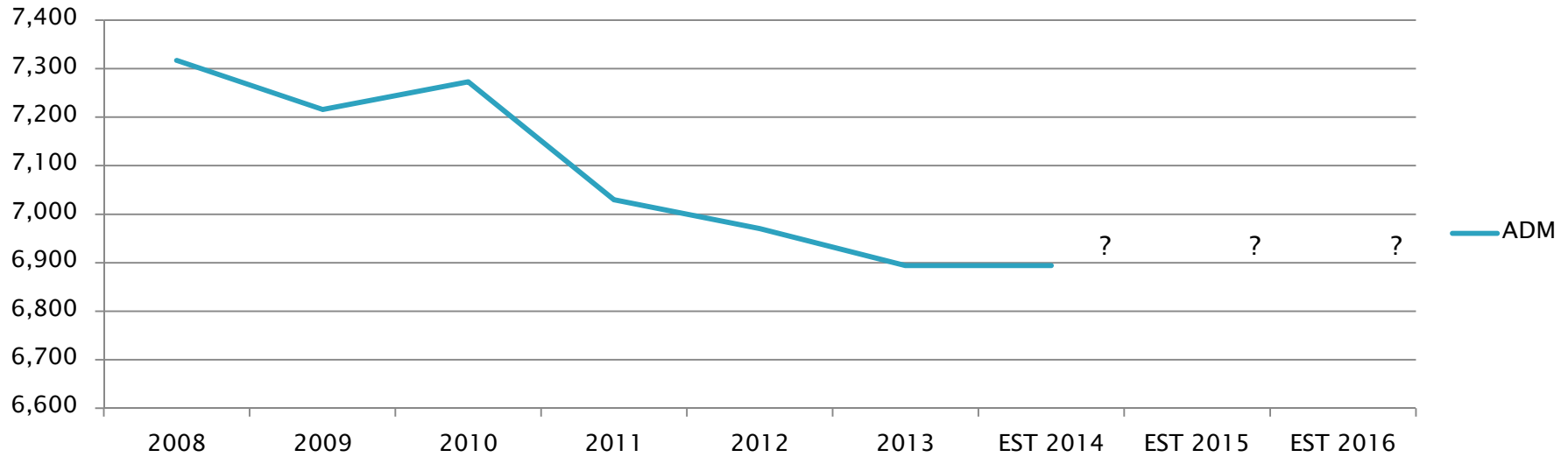
Funding Education in Roane County

Historical & Projected
School Financials
2008–2016

April 2013

Executive Summary #32

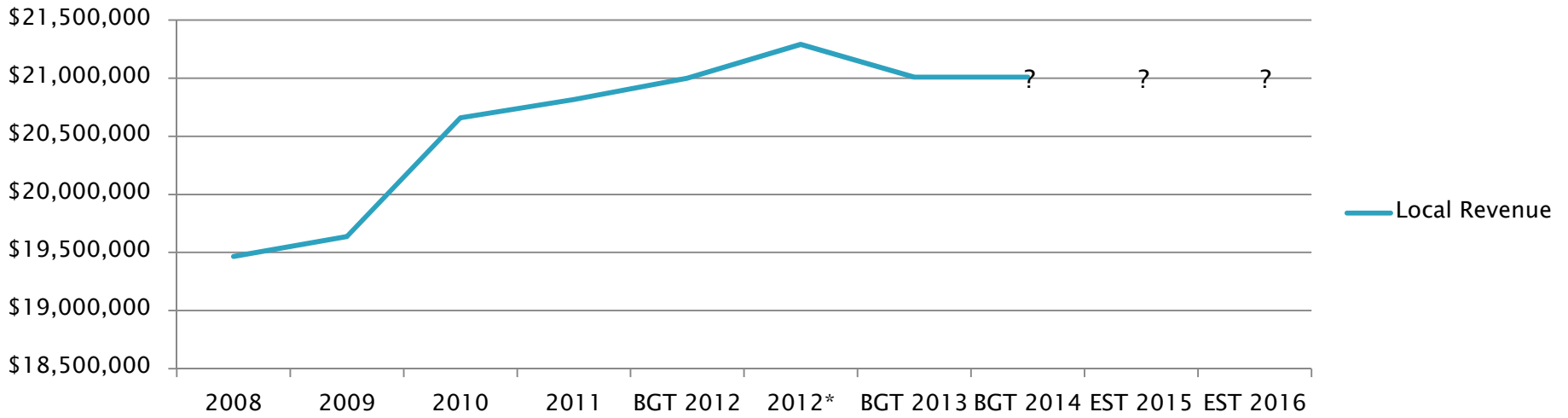
Average Daily Membership Students in Roane County Schools 2008-2016



	2008	2009	2010	2011	2012	2013	EST 2014	EST 2015	EST 2016
ADM	7317	7,216	7,273	7,030	6,970	6,894	6,894		

Data compiled from Annual School Report Card published by State of Tennessee, Department of Education <http://www.tn.gov/education/reportcard/>
 2013 data from the Roane County BEP Allocation estimate for 2013-2014 (April estimate) from TN Dept of Education

Local Revenue Funding 2008-2016



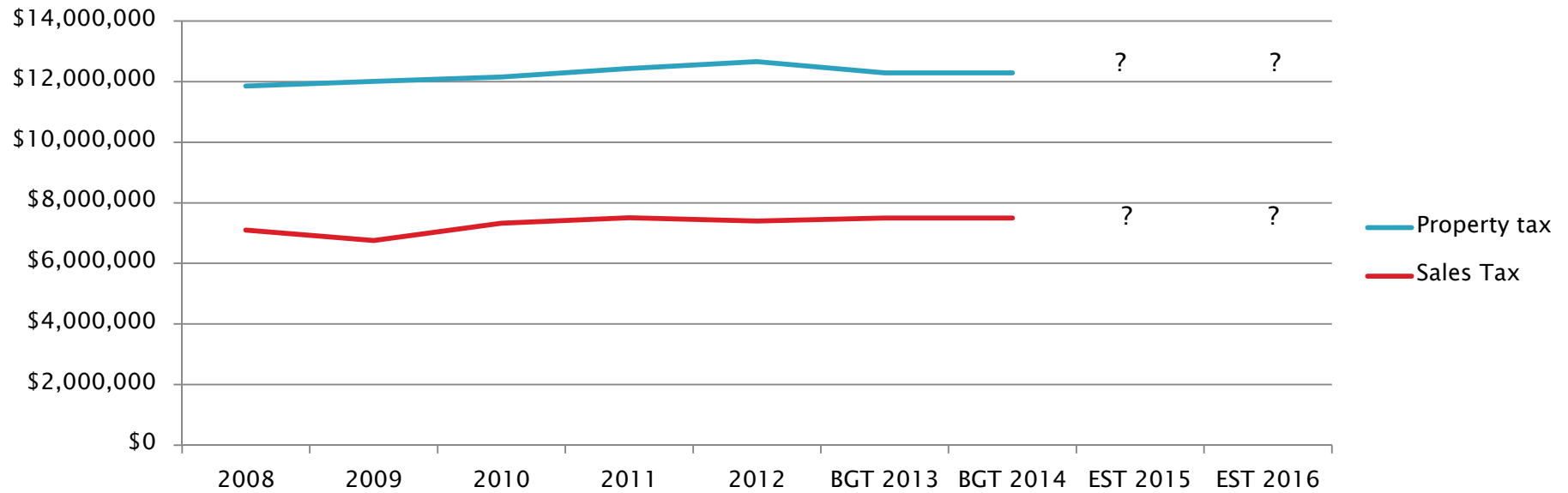
141,144 177	2008	2009	2010	2011	BGT 2012	2012*	BGT 2013	BGT 2014	EST 2015	EST 2016
Loc Rev	\$19,466,655	\$19,638,295	\$20,658,730	\$20,817,548	\$21,000,000	\$21,291,695	\$21,010,500	\$21,010,500		
141 PT	\$11,851,797	\$12,006,396	\$12,152,505	\$12,432,858	\$12,288,000	\$12,665,250	\$12,288,000	\$12,288,000		
141 ST	\$5,264,001	\$4,918,101	\$5,722,400	\$6,004,690	\$5,850,000	\$5,747,339	\$5,700,000	\$5,700,000		
141 TVA	\$825,857	\$878,798	\$1,183,825	\$880,000	\$760,000	\$760,000	\$760,000	\$760,000	\$760,000	\$760,000
144 ST	\$1,525,000	\$1,835,000	\$1,600,000	\$1,500,000	\$1,650,000	\$1,650,000	\$1,800,000	\$1,800,000	\$1,800,000	\$1,800,000
177 PT	\$0	\$0	\$0	\$0	\$452,000	\$469,106	\$462,500	\$462,500	\$462,500	\$462,500
TOTAL	\$19,466,655	\$19,638,295	\$20,658,730	\$20,817,548	\$21,000,000	\$21,291,695	\$21,010,500	\$21,010,500		

Data compiled from Roane County Annual Financial Reports (2008-2012); Roane County published budget (2013); data supplied by RCS at Budget Committee meeting on Feb 4, 2013 (2014)

Local revenue includes property & local taxes (141 & 177); sales tax (141 & 144) and TVA revenue sharing (141)

*2012: Actual revenues show a \$291,695 positive aggregate over budgeted amount

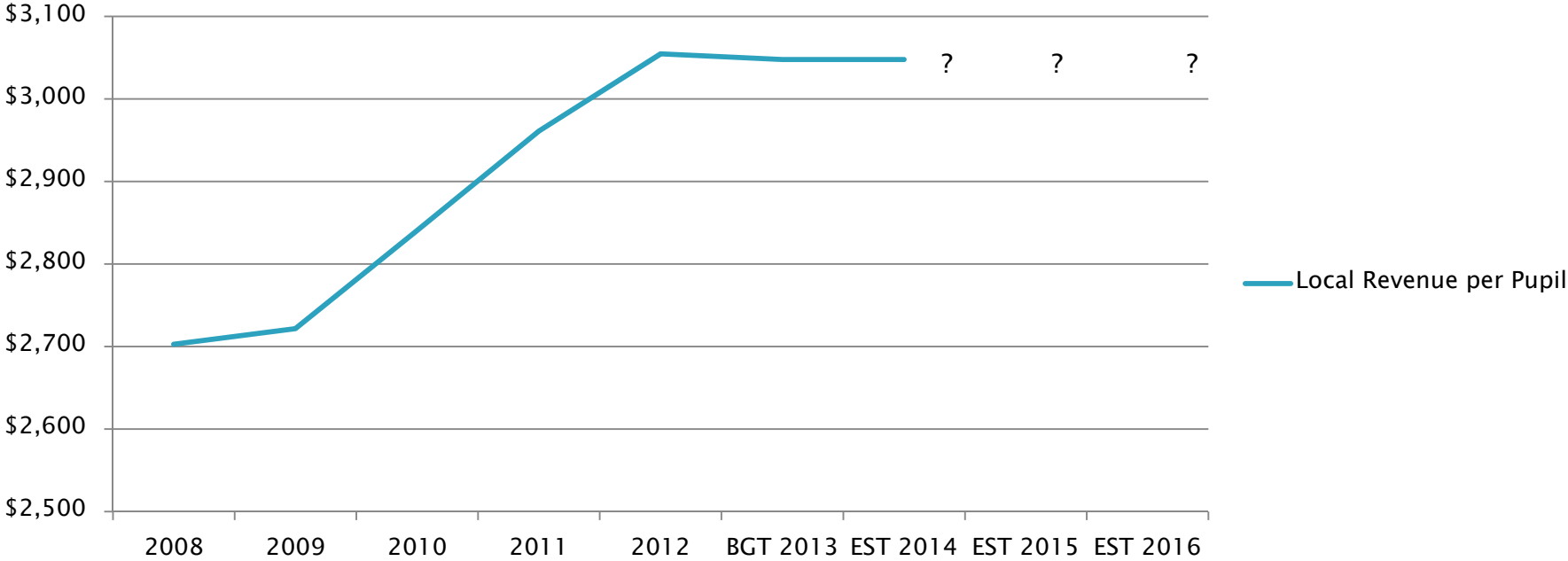
Property & Sales Tax for RCS 2008–2016



	2008	2009	2010	2011	2012	BGT 2013	BGT 2014	EST 2015	EST 2016
Property Tax	\$11,851,797	\$12,006,396	\$12,152,505	\$12,432,858	\$12,665,250	\$12,288,000	\$12,288,000		
Sales Tax	\$7,099,001	\$6,753,101	\$7,322,400	\$7,504,690	\$7,397,339	\$7,500,000	\$7,500,000		

Data compiled from Roane County Annual Financial Reports (2008-2012); Roane County published budget (2013); data supplied by Office of Director of Budgets and Accounts (2014)

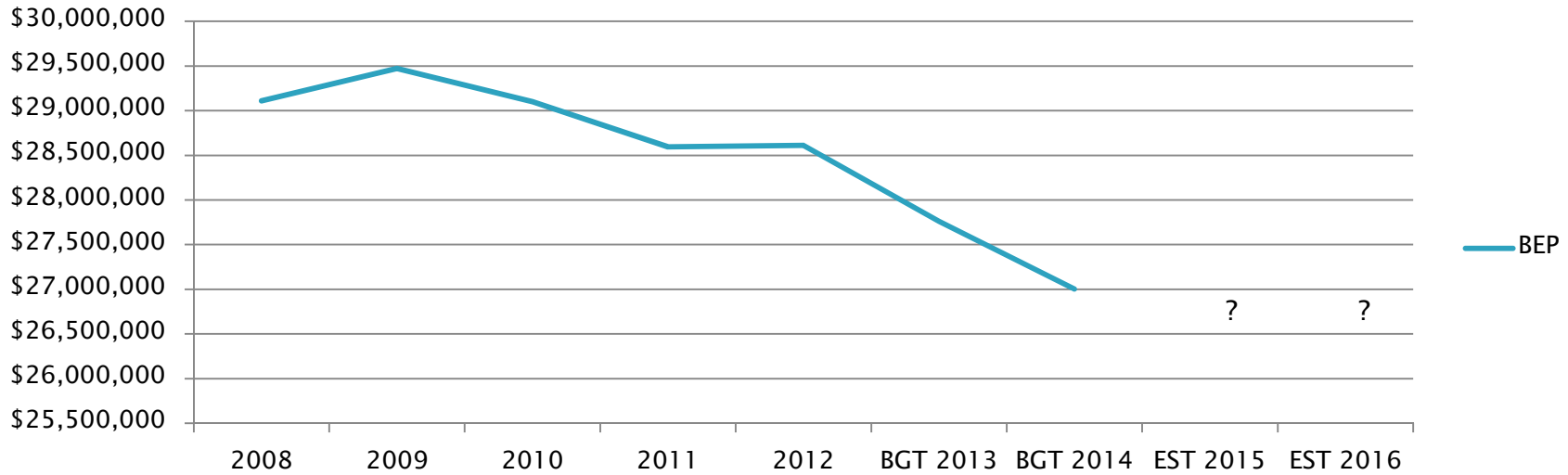
Local Revenue per Pupil 2008-2016



	2008	2009	2010	2011	2012	BGT 2013	EST 2014	EST 2015	EST 2016
Local Rev per Pupil	\$2,703	\$2,721	\$2,840	\$2,961	\$3,055	\$3,048	\$3,048		

Data compiled from Roane County Annual Financial Reports (2008-2012); Roane County published budget (2013); data supplied by Office of Director of Budgets and Accounts (2014)

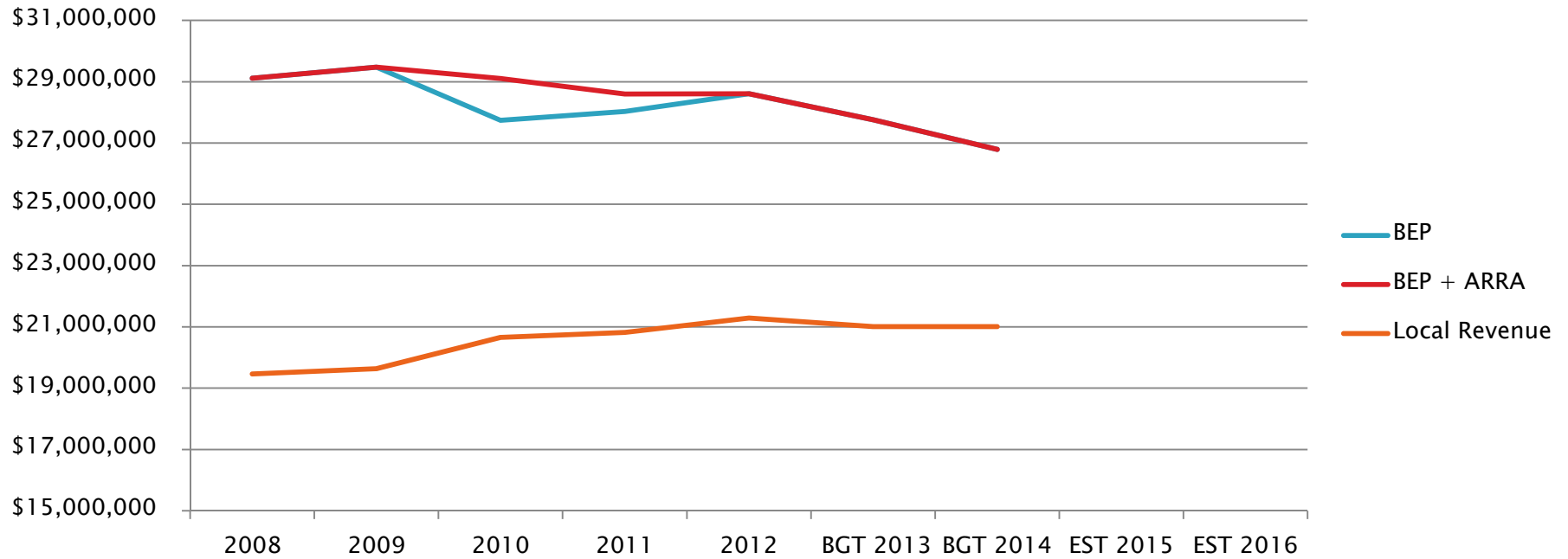
BEP Revenue for Roane County 2008–2016



141,144	2008	2009	2010	2011	2012	BGT 2013	BGT 2014	EST 2015	EST 2016
BEP	\$29,110,001	\$29,473,001	\$29,099,999	\$28,593,999	\$28,611,001	\$27,761,000	\$27,003,000		

Data compiled from Roane County Annual Financial Reports (2009-2012); Roane County published budget (2013); data supplied by RCS at Budget Committee meeting on Feb 4, 2013 (2014); Roane County BEP April estimate provided by Tennessee Department of Education (2014)

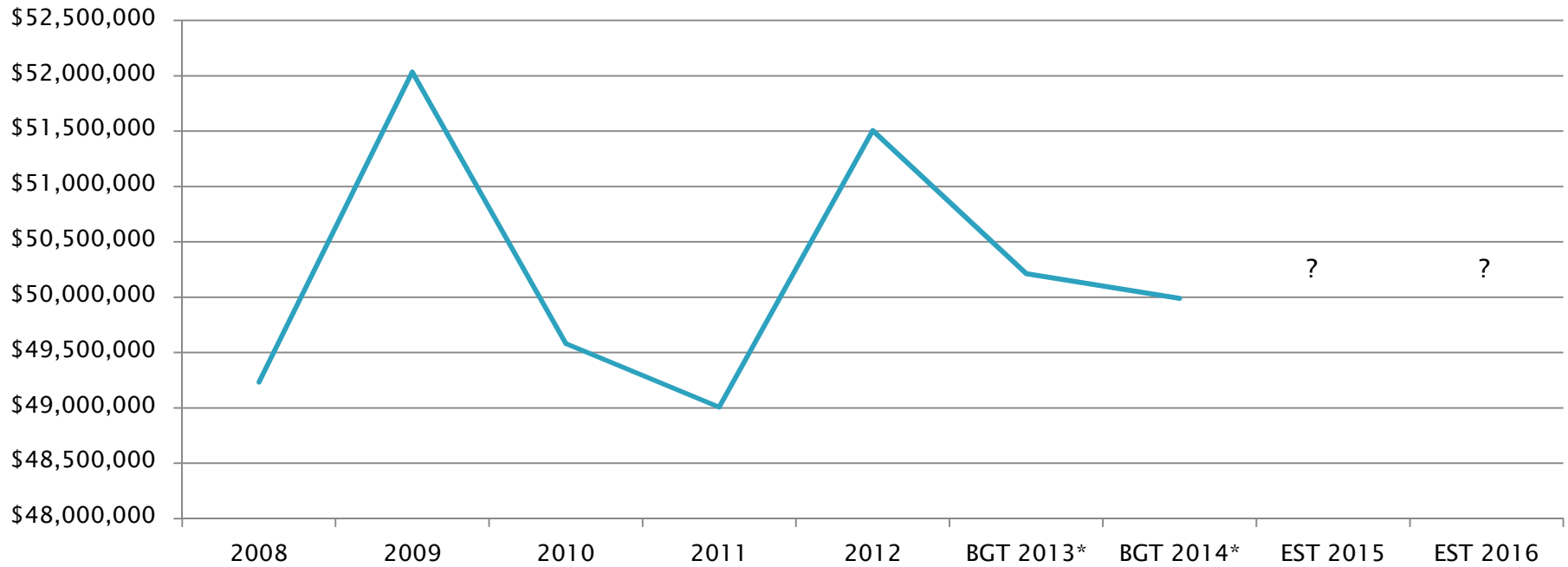
BEP v Local Revenue 2008–2016



141,144,177	2008	2009	2010	2011	2012	BGT 2013	BGT 2014	EST 2015	EST 2016
BEP	\$29,110,001	\$29,473,001	\$27,736,799	\$28,032,178	\$28,611,001	\$27,761,000	\$26,791,000		
BEP+ARRA	\$29,110,001	\$29,473,001	\$29,099,999	\$28,593,999	\$28,611,001	\$27,761,000	\$26,791,000		
LOCAL	\$19,466,655	\$19,638,295	\$20,658,730	\$20,817,548	\$21,291,695	\$21,010,500	\$21,010,500		

Data compiled from Roane County Annual Financial Reports (2008-2012); Roane County published budget (2013); data supplied by RCS at Budget Committee meeting on Feb 4, 2013 (2014)
 Data supplied by Office of Director of Accounts and Budgets (2014)
 Local revenue includes property & local taxes (141 & 177); sales tax (141 & 144) and TVA revenue sharing (141)

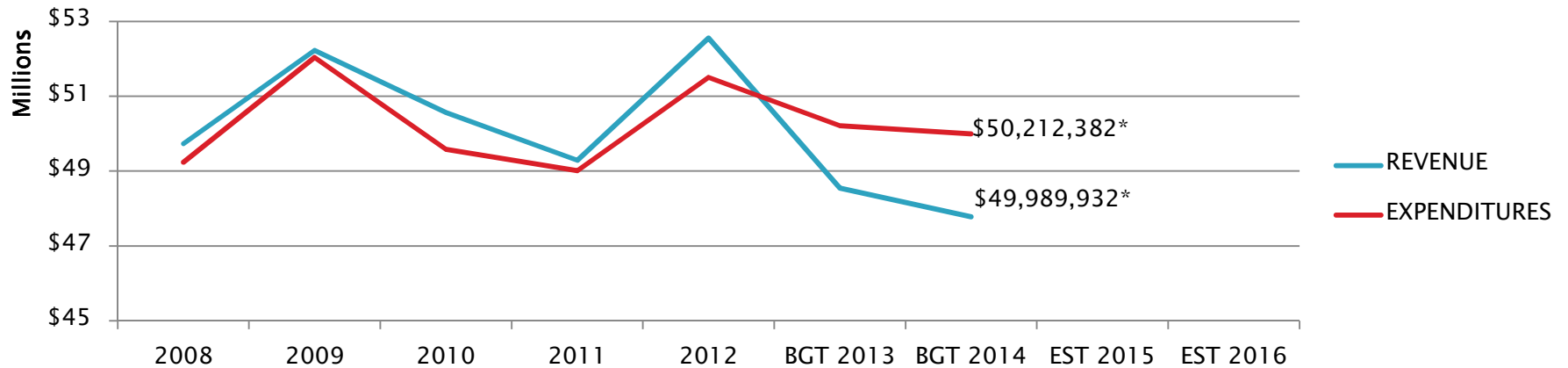
Operational Expenditures 2008–2016



141,144 177	2008	2009	2010	2011	2012	BGT 2013*	BGT 2014*	EST 2015	EST 2016
	\$49,233,270	\$ 52,035,094	\$ 49,581,139	\$ 49,007,641	\$ 51,506,510	\$ 50,212,382	\$ 49,989,932		

Data compiled from Roane County Annual Financial Reports (2008-2012); Roane County published budget (2013); data supplied by RCS at Budget Committee meeting on Feb 4, 2013 (2014)
 Data does not include Transfers In and ARRA Stimulus Expenditures (factored out ARRA Revenue amount from expenditures)
 * Budget figures take into account a 4% rate of budgeted expenditures expected by RCS Finance Department.

Total Operating Revenue v Total Operating Expenditures 2008–2016



141&144&177	2008	2009	2010	2011	2012	BGT 2013	BGT 2014	EST 2015	EST 2016
Total Rev	\$ 49,732,291	\$ 52,224,814	\$ 52,243,888	\$ 52,448,007	\$ 52,653,032	\$ 48,541,136	\$ 47,779,316		
Rev - ARRA	\$ -	\$ -	\$ 50,561,924	\$ 49,287,462	\$ -	\$ -	\$ -		
Total Exp	\$ 49,320,578	\$ 52,035,094	\$ 51,263,103	\$ 52,168,186	\$ 51,814,245	\$ 50,212,382	\$ 49,989,932		
Exp - ARRA	\$ -	\$ -	\$ 49,581,139	\$ 49,007,641	\$ -	\$ -	\$ -		
Operational Impact	\$ 411,713	\$ 189,720	\$ 980,785	\$ 279,821	\$ 838,787	\$ (1,671,246)	\$ (2,210,616)		
Transfers	\$ (1,151,585)	\$ (800,000)	\$ (403,740)	\$ (1,212,232)	\$ (168,245)	\$ -	\$ -		
Actual Impact	\$ (739,872)	\$ (610,280)	\$ 577,045	\$ (932,411)	\$ 670,542	\$ (1,671,246)	\$ (2,210,616)		

Data compiled from Roane County Annual Financial Reports (2009-2012); Roane County published budget (2013); data supplied by RCS at Budget Committee meeting Feb 4, 2013(2014)

Revenue figures include all revenues received in Fund 141 & Fund 144 along with Local Property Tax and TVA in Lieu tax in Fund 177.

Expenditures include all expenditures for Fund 141 and Fund 144. Expenditures that relate to local revenue in Fund 177 are found in Fund 144 and are covered by a transfer of funds from Fund 177 to Fund 144 for the purchase of school buses.