



U.S. DEPARTMENT OF  
**ENERGY**

OFFICE OF  
**ENVIRONMENTAL  
MANAGEMENT**

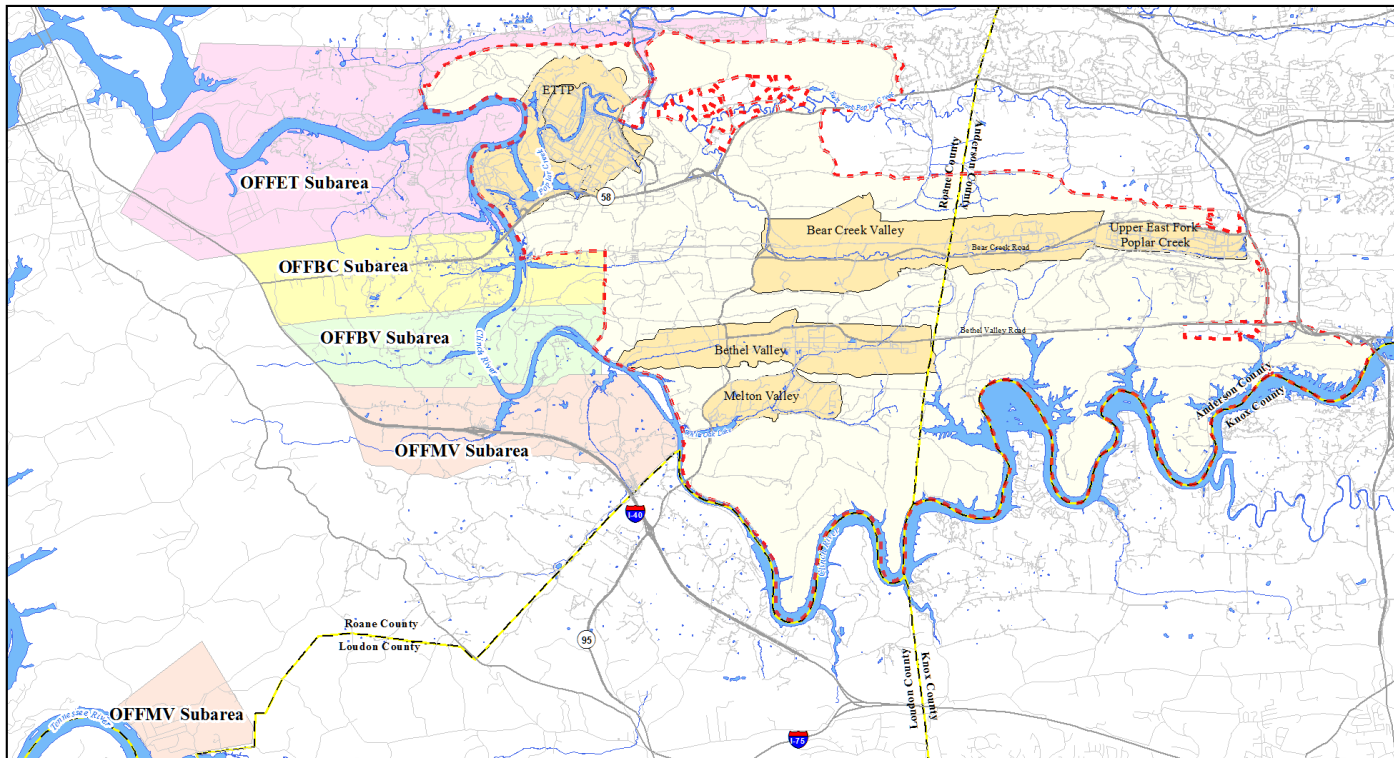
# Offsite Groundwater Assessment

---

**Dennis Mayton, P. G., DOE Groundwater Project Manager,  
Oak Ridge Office of Environmental Management  
Steve Haase, Ph.D., UCOR, Senior Geohydrologist**

## Top-ranked project: Offsite Groundwater Assessment

- Remedial Site Evaluation (RSE) Work Plan approved in 2014
  - Anions, metals, radioactive constituents, volatile organics, general chemistry, and field parameters
- Conducted site visits and obtained access agreements
- 49 locations (34 wells, 15 springs) were sampled in four offsite subareas



## All groundwater sampling events have been completed successfully

- First Sampling Event FY2015 Q2 (43 locations)
  - Three locations showed exceedances of U.S. EPA National Primary Drinking Water Standards (lead at one location, lead and gross alpha activity (another location), and combined radium -226 and -228 activity (at third location))
- Second Sampling Event in FY2015 Q4 (49 locations)
  - No exceedances of U.S. EPA National Primary Drinking Water Standards
- Third Event (Confirmatory Sampling) FY2016 Q2 (18 locations)
  - Completed February 2016
  - No exceedances of U.S. EPA National Primary Drinking Water Standards



- Remedial Site Evaluation (RSE) Report milestone November 15, 2016

	FISCAL YEAR															
	14				15				16				17			
	Q1	Q2	Q3	Q4	Q1	Q2	Q3	Q4	Q1	Q2	Q3	Q4	Q1	Q2	Q3	Q4
<b>Off-site Groundwater Assessment</b>																
Gather data/DQO	■	■														
RSE Work Plan		■	■	■												
FY 2015 Q2 Sampling						■										
FY 2015 Q4 Sampling								■								
FY 2016 Q2 Confirmatory Sampling										■						
RSE Report (D1 and D2)										■	■	■	◆	■	■	

◆ FFA Milestone (D1 RSE Report)

Questions?